

Manufactured in accordance with TU 4861-021-64600223-12

3000 – 126000 m<sup>3</sup>/hour

### Application:

- ◆ for air pressurization in the fire protection systems;
- ◆ for fresh air supply in case of fire;
- ◆ for general ventilation systems (equipment may be installed with short ductwork).

Aerodynamic performance is defined in accordance with ISO 5801 (GOST 10921). Characteristics are specified for normal atmospheric conditions (20°C, 760MmHg). Dynamic pressure corresponds to the cross-section of air pressurization fan outlet flange.

Air pressurization fans may operate without limitations for power in the whole range of capacity.

Air pressurization fans may be mounted in any position (horizontally, vertically, inclined).

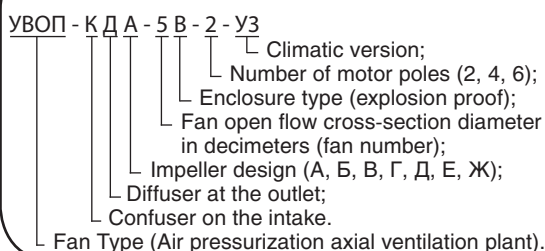
Confuser on the intake of considered air pressurization fans is required for adjustment of passing flow and reduction of input resistance. It is recommended to be used in case, when fan is the first device in a circuit. In case of long input manifold installation of confuser on the fan intake is not required.

Diffuser on the output of air pressurization fans is required to partially use dynamic pressure and to reduce pressure losses in discharge manifold.

Explosion-proof version is available.



Fans are denoted as follows:



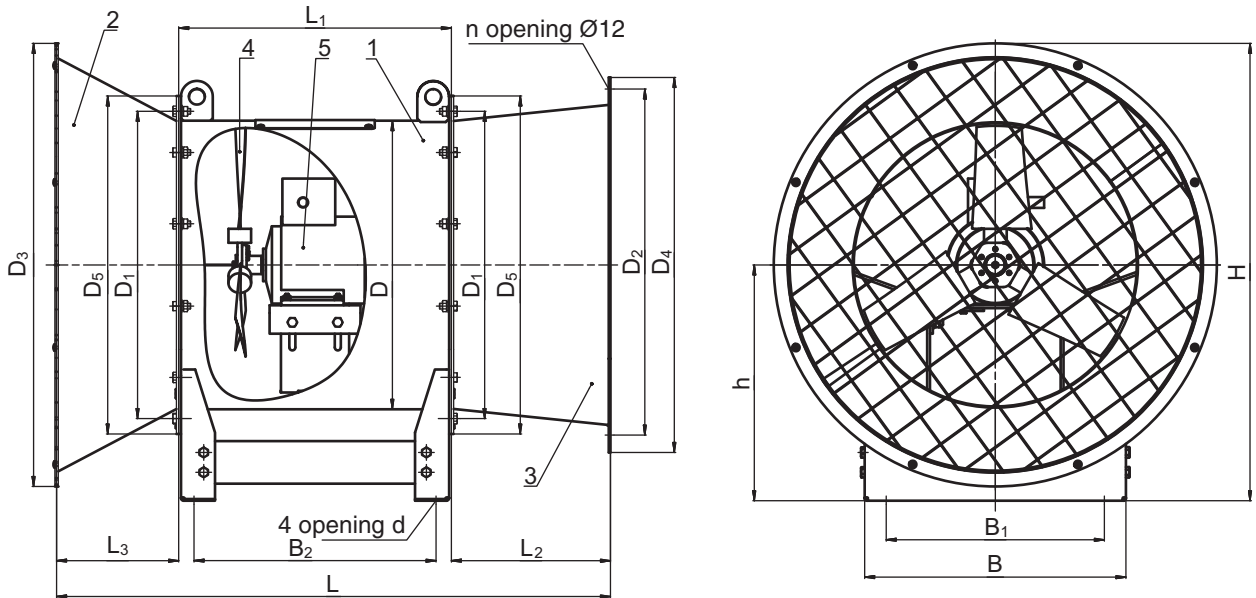
№	Fan Type	Dimensions [mm]															n	Weight [kg]						
		D	D <sub>1</sub>	D <sub>2</sub>	D <sub>3</sub>	D <sub>4</sub>	D <sub>5</sub>	d	B	B <sub>1</sub>	B <sub>2</sub>	L	L <sub>1</sub>	L <sub>2</sub>	L <sub>3</sub>	H			h					
1	УВОП-КД-А-5-2																						38	
2	УВОП-КД-Б-5-2																							43
3	УВОП-КД-В-5-2	508	560	620	780	660	595	12	460	384	426	975	480	280	215	805	415	12					46	
4	УВОП-КД-Г-5-2																							49
5	УВОП-КД-Д-5-2																							56
6	УВОП-КД-А-6,3-2																							62
7	УВОП-КД-Б-6,3-2																							70
8	УВОП-КД-В-6,3-2	638	690	770	950	810	730	12	570	480	522	1210	610	350	250	975	500	12					70	
9	УВОП-КД-Г-6,3-2																							91
10	УВОП-КД-Д-6,3-2																							97
11	УВОП-КД-А-8-4																							121
12	УВОП-КД-Б-8-4																							129
13	УВОП-КД-В-8-4																							136
14	УВОП-КД-Г-8-4																							144
15	УВОП-КД-Д-8-4																							136
16	УВОП-КД-Е-8-4																							144
17	УВОП-КД-Ж-8-4	816	860	960	1080	1000	910	14	770	680	630	1490	740	440	310	1095	555	16					144	
18	УВОП-КД-А-8-2																							138
19	УВОП-КД-Б-8-2																							200
20	УВОП-КД-В-8-2																							214
21	УВОП-КД-Г-8-2																							234
22	УВОП-КД-Д-8-2																							214
23	УВОП-КД-Е-8-2																							234
24	УВОП-КД-А-10-6																							95
25	УВОП-КД-Б-10-6																							97
26	УВОП-КД-В-10-6																							140
27	УВОП-КД-Г-10-6																							147
28	УВОП-КД-Д-10-6																							156
29	УВОП-КД-Е-10-6																							127
30	УВОП-КД-А-10-4	1016	1070	1190	1410	1225	1110	18	950	860	590	1585	710	550	325	1435	730	16					143	
31	УВОП-КД-Б-10-4																							151
32	УВОП-КД-В-10-4																							158
33	УВОП-КД-Г-10-4																							166
34	УВОП-КД-Д-10-4																							251
35	УВОП-КД-Е-10-4																							195
36	УВОП-КД-А-12,5-6																							200
37	УВОП-КД-Б-12,5-6																							282
38	УВОП-КД-В-12,5-6																							312
39	УВОП-КД-Г-12,5-6																							282
40	УВОП-КД-А-12,5-4	1266	1320	1470	1770	1500	1360	18	1100	1000				650	380	1795	910	16					353	
41	УВОП-КД-Б-12,5-4																							383
42	УВОП-КД-В-12,5-4																							488
43	УВОП-КД-Г-12,5-4																							462
44	УВОП-КД-Д-12,5-4																							

Notes:

- 1) Weight specified in the table does not include weight of diffuser and confuser.
- 2) Weight is specified for reference only

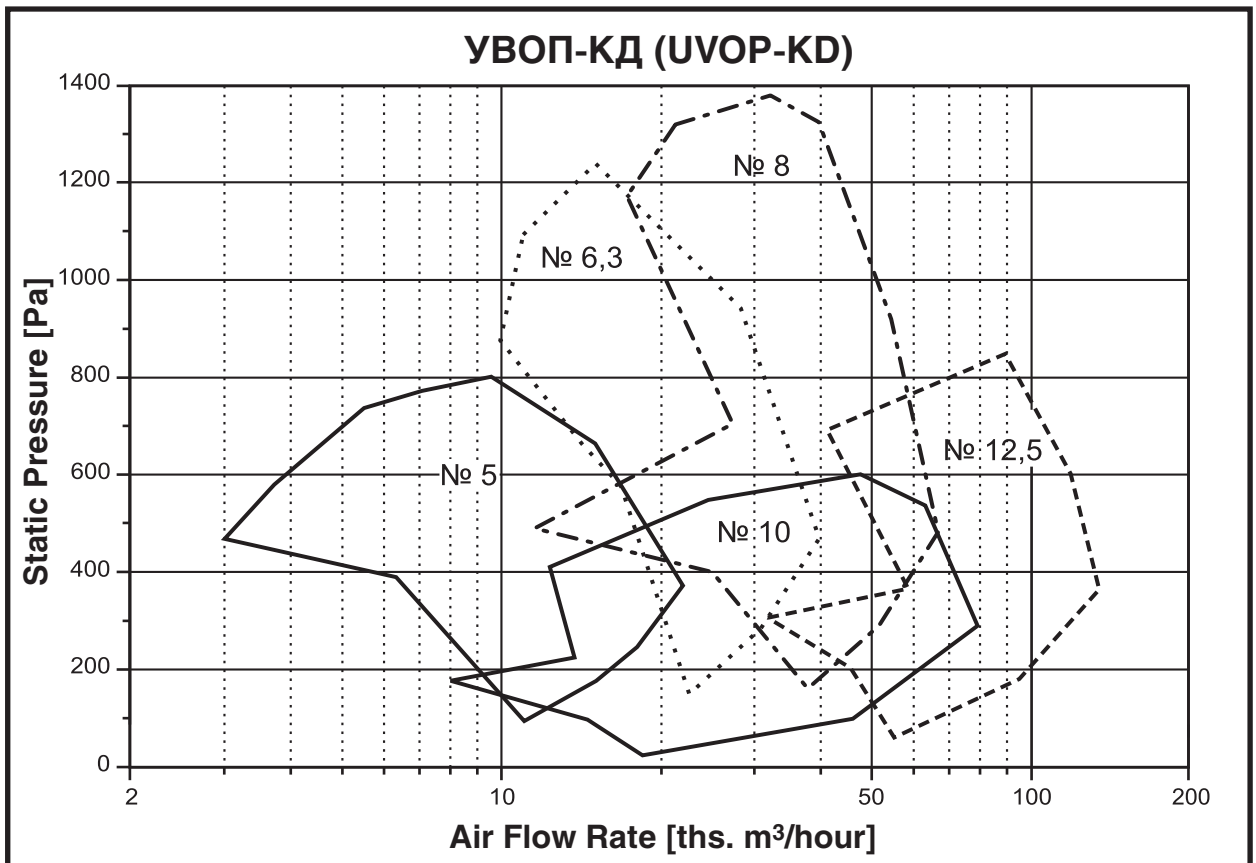
## Weights of Confuser and Diffuser for УВОП (UVOP) Fans

Weight [kg]									
Diffuser					Confuser				
УВОП-5	УВОП-6,3	УВОП-8	УВОП-10	УВОП-12,5	УВОП-5	УВОП-6,3	УВОП-8	УВОП-10	УВОП-12,5
10	15	23	30	48	10	15	22	27	46

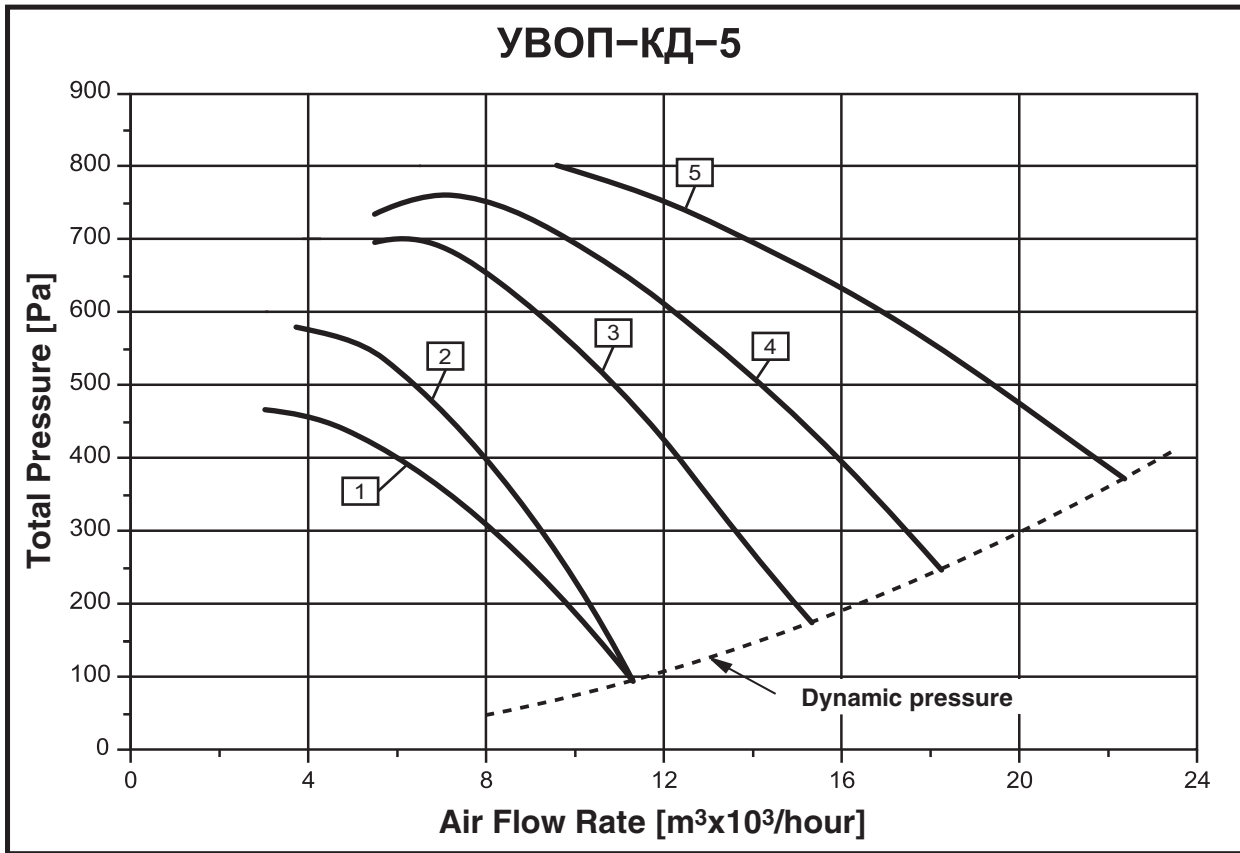


1 – fan; 2 – confuser; 3 – diffuser; 4 – impeller; 5 – electric motor.

## OPERATION AREA SUMMARY DIAGRAM



AIR PRESSURIZATION FANS AERODYNAMIC PERFORMANCE

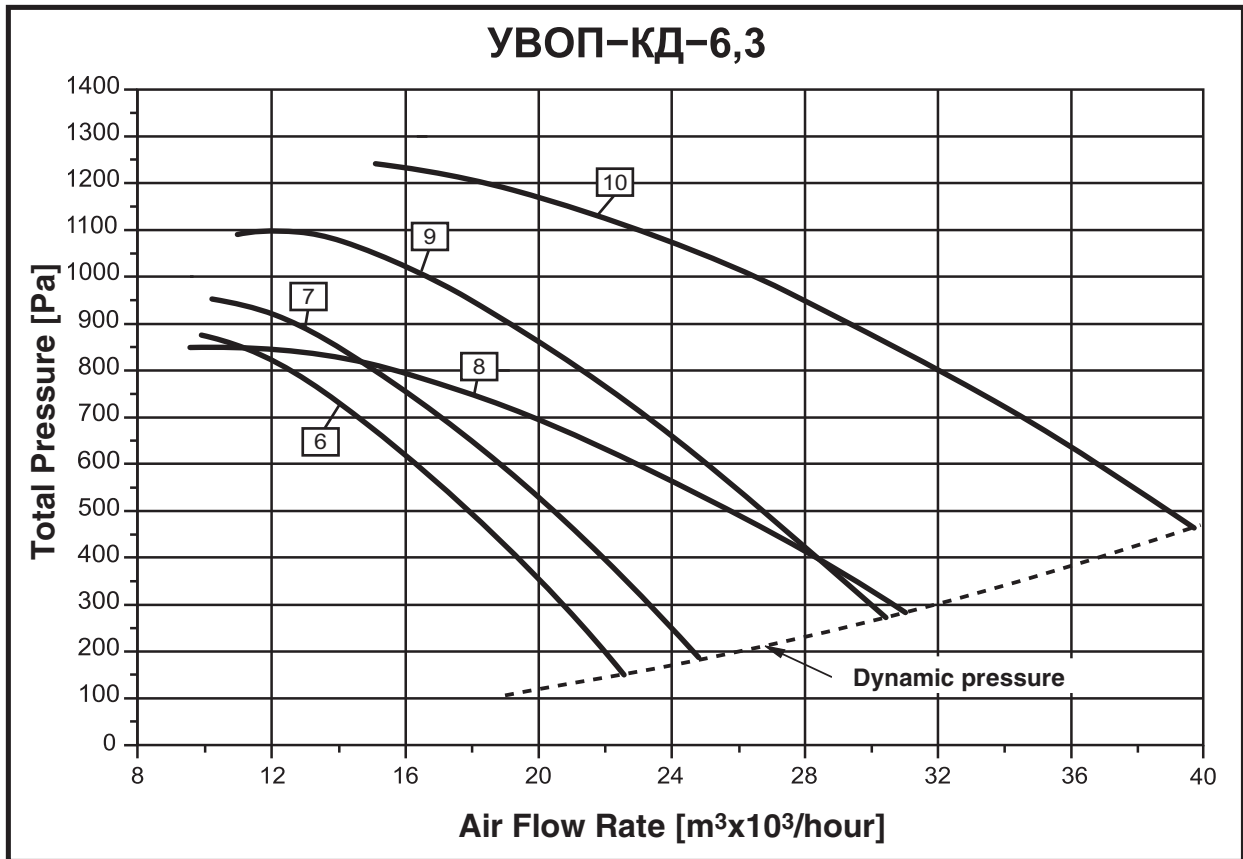


No.	Fan Type	Electric Motor			Operation Area Parameters		Adjusted Sound Power Level
		Type	Rotation Speed [min <sup>-1</sup> ]	Generating Capacity [kW]	Efficiency [ $m^3 \times 10^3 / \text{hour}$ ]	Total Pressure [Pa]	
1	УВОП-А-5-2	АИР71В2	2900	1,1	3,0 – 11,0	460 – 95	99
2	УВОП-Б-5-2	АИР80А2	2900	1,5	3,7 – 11,0	580 – 95	100
3	УВОП-В-5-2	АИР80В2	2900	2,2	5,5 – 15,0	700 – 175	98
4	УВОП-Г-5-2*	АИР90Л2	2900	3,0	5,5 – 18,0	770 – 245	98
5	УВОП-Д-5-2*	АИР100С2	2900	4,0	9,6 – 22,0	800 – 370	97

Notes:

\* Explosion-proof version is not available.

AIR PRESSURIZATION FANS AERODYNAMIC PERFORMANCE

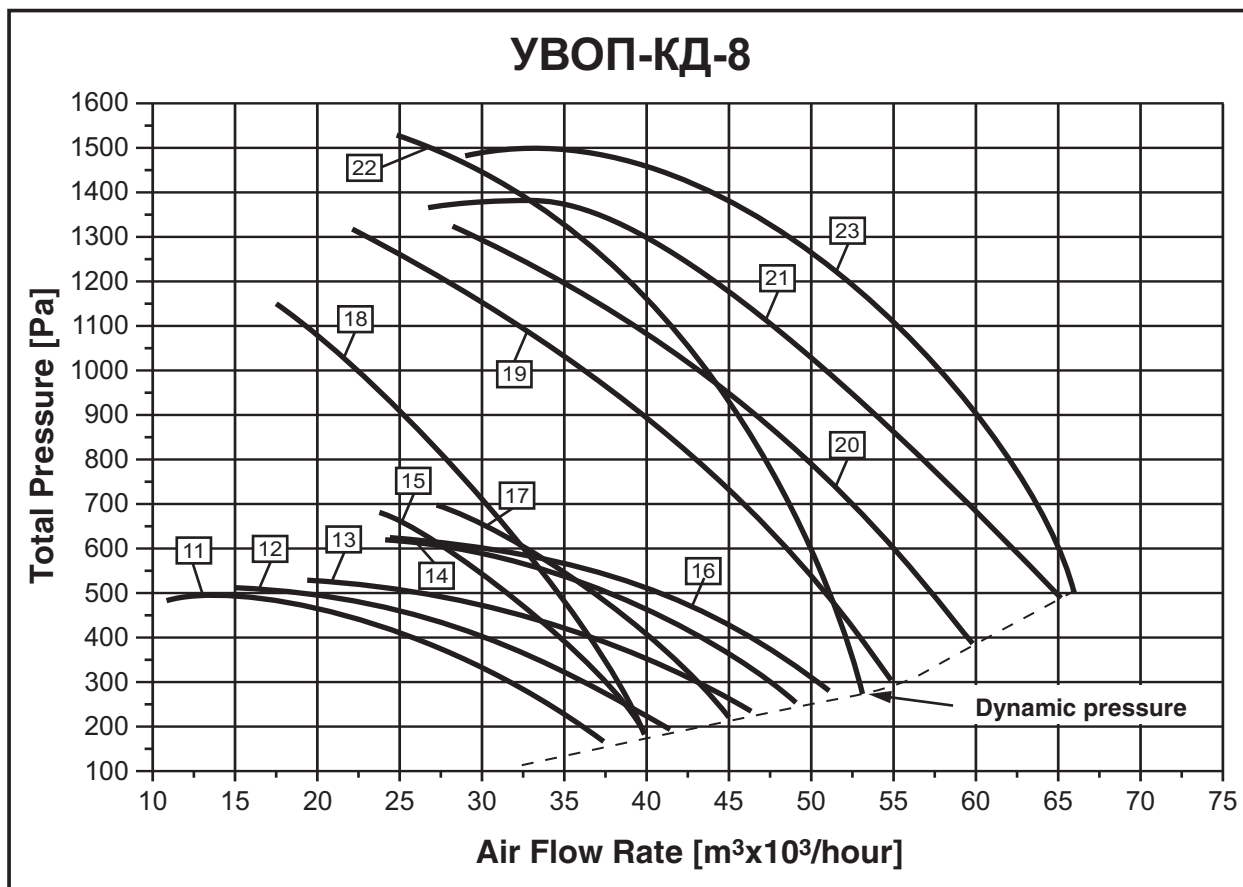


No.	Fan Type	Electric Motor			Operation Area Parameters		Adjusted Sound Power Level
		Type	Rotation Speed [min <sup>-1</sup> ]	Generating Capacity [kW]	Efficiency [m³x10³/hour]	Total Pressure [Pa]	
6	УВОП-А-6,3-2	АИР100S2	2900	4	9,9 – 22,0	875 – 150	108
7	УВОП-Б-6,3-2	АИР100L2	2900	5,5	10,2 – 25,0	950 – 180	107
8	УВОП-В-6,3-2	АИР100L2	2900	5,5	9,6 – 31,0	850 – 280	102
9	УВОП-Г-6,3-2*	АИР112M2	2900	7,5	11,0 – 30,0	1100 – 270	106
10	УВОП-Д-6,3-2*	АИР132M2	2900	11,0	15,0 – 39,0	1240 – 460	105

Notes:

\* Explosion-proof version is not available.

**AIR PRESSURIZATION FANS AERODYNAMIC PERFORMANCE**

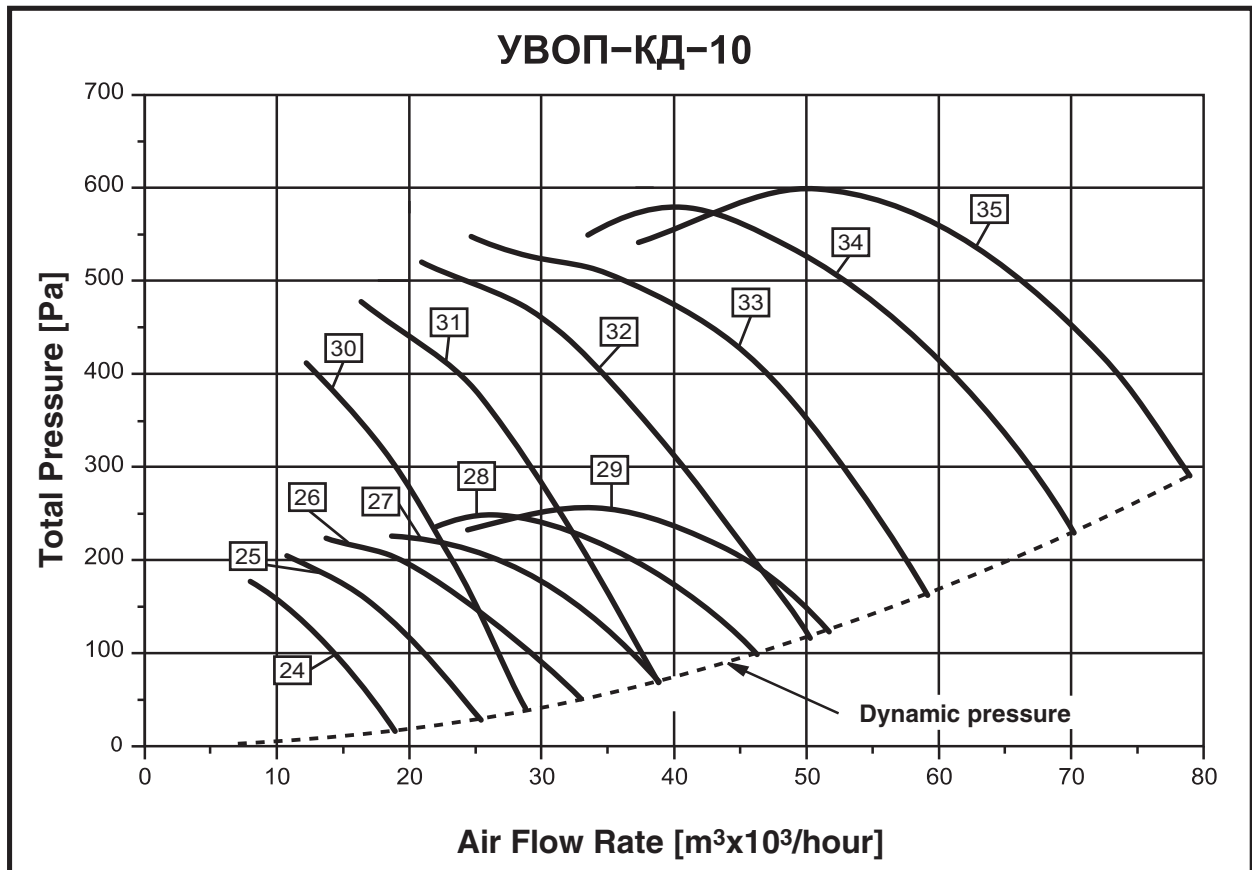


No.	Fan Type	Electric Motor			Operation Area Parameters		Adjusted Sound Power Level
		Type	Rotation Speed [min <sup>-1</sup> ]	Generating Capacity [kW]	Efficiency [m³x10³/hour]	Total Pressure [Pa]	
11	УВОП-А-8-4	АИР100L4	1450	4,0	11,5 – 37,0	510 – 155	94
12	УВОП-Б-8-4	АИР112M4	1450	5,5	15,2 – 41,0	520 – 190	93
13	УВОП-В-8-4	АИР112M4	1450	5,5	19,2 – 46,0	530 – 250	92
14	УВОП-Г-8-4	АИР132S4	1450	7,5	24,0 – 49,0	615 – 270	93
15	УВОП-Д-8-4	АИР132S4	1450	7,5	23,5 – 40,0	680 – 180	95
16	УВОП-Е-8-4	АИР132M4	1450	11,0	28,8 – 51,0	610 – 290	94
17	УВОП-Ж-8-4	АИР132M4	1450	11,0	27,3 – 45,0	700 – 230	95
18	УВОП-А-8-2	АИР132M2	2900	11,0	17,5 – 42,0	1150 – 180	102
19	УВОП-Б-8-2*	АИР160S2	2900	15,0	22,0 – 55,0	1310 – 300	104
20	УВОП-В-8-2*	АИР160M2	2900	18,5	28,0 – 60,0	1330 – 400	106
21	УВОП-Г-8-2*	АИР180S2	2900	22,0	27,0 – 62,0	1360 – 490	107
22	УВОП-Д-8-2*	АИР160M2	2900	18,5	22,0 – 53,2	1530 – 286	108
23	УВОП-Е-8-2*	АИР180S2	2900	22	28,0 – 65,8	1480 – 515	109

Notes:

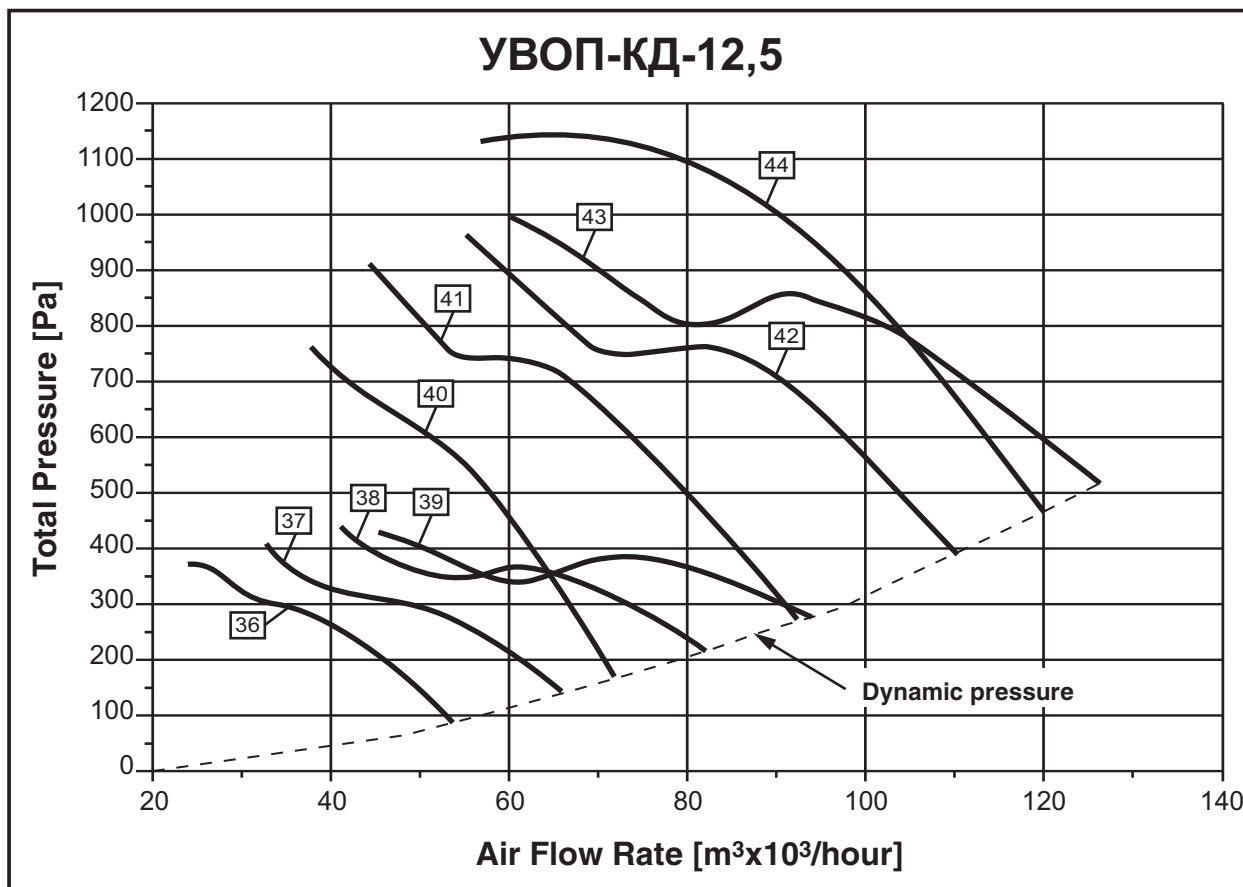
\* Explosion-proof version is not available.

AIR PRESSURIZATION FANS AERODYNAMIC PERFORMANCE



No.	Fan Type	Electric Motor			Operation Area Parameters		Adjusted Sound Power Level
		Type	Rotation Speed [min <sup>-1</sup> ]	Generating Capacity [kW]	Efficiency [m³x10³/hour]	Total Pressure [Pa]	
24	УВОП-А-10-6	АИР80А6	950	0,75	8,0 – 18,0	170 – 20	82
25	УВОП-Б-10-6	АИР80В6	950	1,1	12,0 – 25,0	190 – 30	84
26	УВОП-В-10-6	АИР100L6	950	2,2	14,0 – 33,0	220 – 50	87
27	УВОП-Г-10-6	АИР100L6	950	2,2	18,0 – 38,0	220 – 70	89
28	УВОП-Д-10-6	АИР112А6	950	3,0	21,0 – 46,0	250 – 100	91
29	УВОП-Е-10-6	АИР112В6	950	4,0	24,0 – 51,0	260 – 125	92
30	УВОП-А-10-4	АИР100S4	1450	3,0	12,0 – 28,0	400 – 38	91
31	УВОП-Б-10-4	АИР100L4	1450	4,0	16,0 – 38,0	450 – 70	94
32	УВОП-В-10-4	АИР112М4	1450	5,5	24,0 – 50,0	500 – 120	96
33	УВОП-Г-10-4	АИР132S4	1450	7,5	28,0 – 59,0	520 – 170	98
34	УВОП-Д-10-4	АИР132М4	1450	11,0	33,0 – 70,0	580 – 230	100
35	УВОП-Е-10-4	АИР160S4	1450	15,0	37,0 – 79,0	600 – 290	101

**AIR PRESSURIZATION FANS AERODYNAMIC PERFORMANCE**



No.	Fan Type	Electric Motor			Operation Area Parameters		Adjusted Sound Power Level
		Type	Rotation Speed [min <sup>-1</sup> ]	Generating Capacity [kW]	Efficiency [m <sup>3</sup> x10 <sup>3</sup> /hour]	Total Pressure [Pa]	
36	УВОП-А-12,5-6	АИР132S6	950	5,5	24,0 – 53,7	350 – 90	94
37	УВОП-Б-12,5-6	АИР132M6	950	7,5	33,0 – 66,3	400 – 140	96
38	УВОП-В-12,5-6	АИР160S6	950	11,0	41,0 – 82,8	440 – 220	98
39	УВОП-Г-12,5-6	АИР160M6	950	15,0	45,0 – 93,7	430 – 280	100
40	УВОП-А-12,5-4	АИР160S4	1450	15,0	38,0 – 71,6	760 – 165	101
41	УВОП-Б-12,5-4	АИР180S4	1450	22,0	46,0 – 92,3	900 – 270	105
42	УВОП-В-12,5-4	АИР180M4	1450	30,0	55,0 – 110,0	935 – 390	106
43	УВОП-Г-12,5-4	АИР200L4	1450	45,0	60,0 – 126,0	990 – 510	108
44	УВОП-Д-12,5-4	АИР200M4	1450	37,0	57,0 – 120,0	1130 – 460	110

Manufactured in accordance with TU 4861-022-64600223-11

### Application:

- ◆ for air pressurization in the fire protection systems and for fresh air supply in case of fire;
- ◆ for general ventilation systems (equipment may be installed with short ductwork).

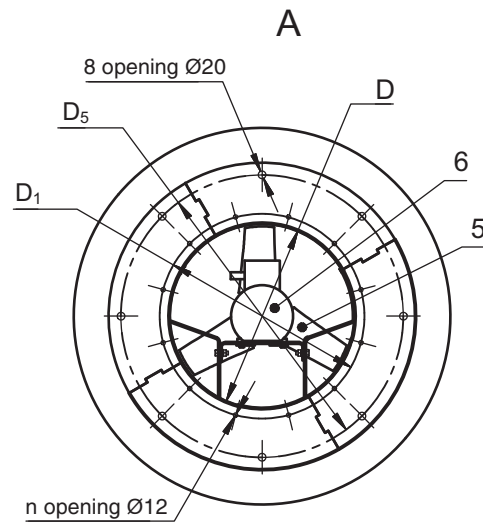
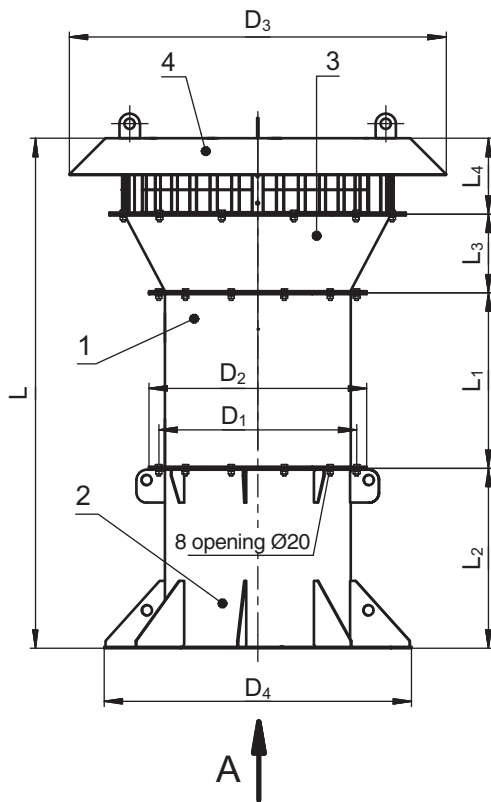
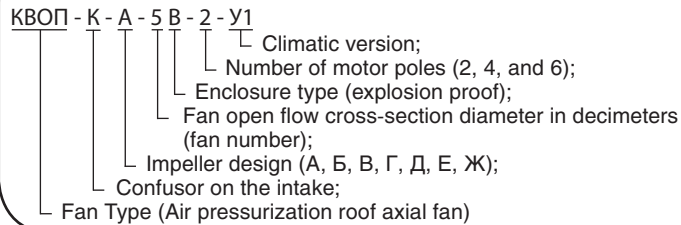
Aerodynamic performance is defined in accordance with ISO 5801 (GOST 10921). Characteristics are specified for normal atmospheric conditions (20°C, 760MmHg, 1010GPa). Dynamic pressure corresponds to the cross-section of air pressurization fan outlet flange.

Air pressurization fans may operate without limitations for power in the whole range of capacity.



Explosion-proof version is available.

Fans are denoted as follows:



- 1 – Fan;
- 2 – Mounting sleeve (СК-К (СК-К) - without check-valve, СК-КО (СК-КО) - with check-valve);
- 3 – Confusor;
- 4 – Roof;
- 5 – Impeller;
- 6 – Engine.

### Notes:

- 1) Mounting sleeve and check-valve has to be pointed as options with order.
- 2) Selection of mounting sleeve – see p. 162.



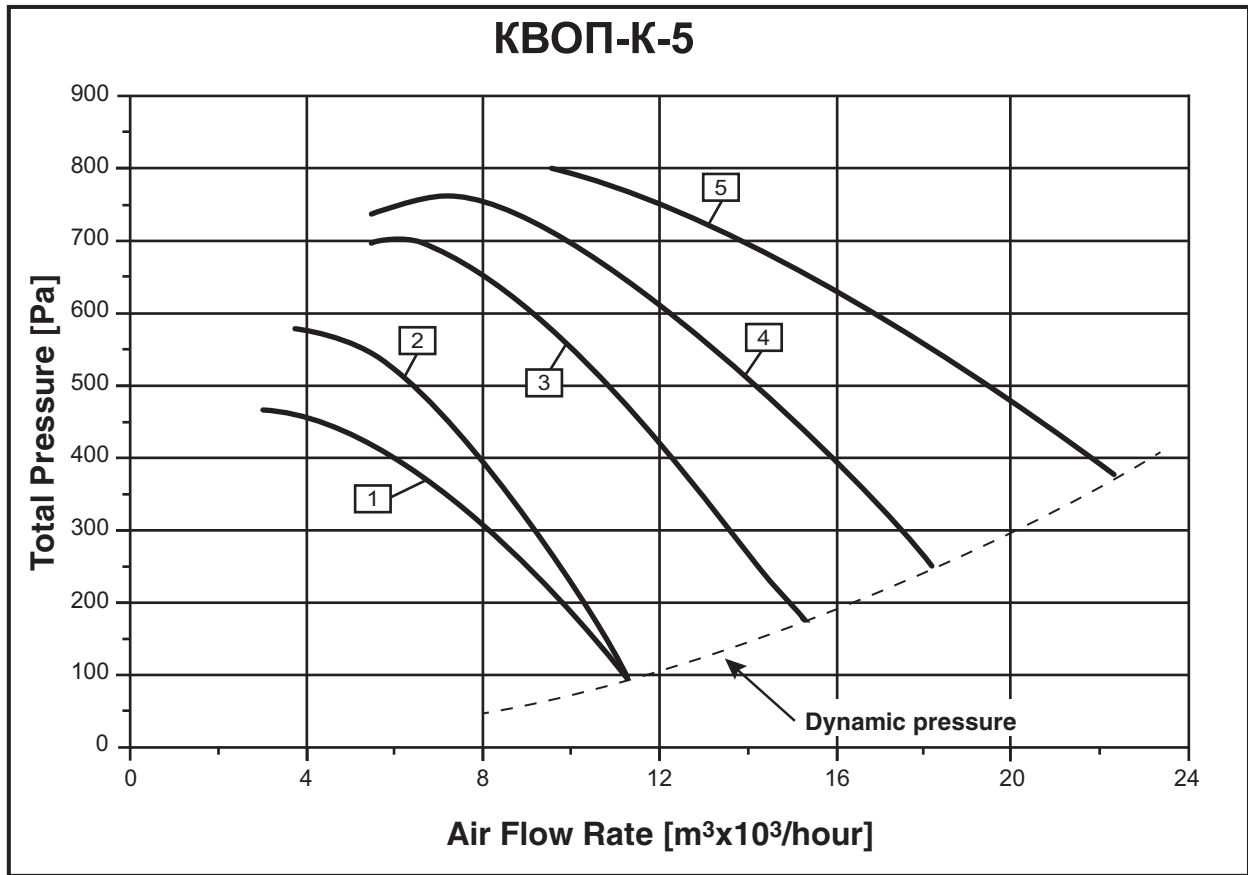
No.	Fan Type	Dimensions [mm]											n	Weight [kg]		
		D	D <sub>1</sub>	D <sub>2</sub>	D <sub>3</sub>	D <sub>4</sub>	D <sub>5</sub>	L	L <sub>1</sub>	L <sub>2</sub>	L <sub>3</sub>	L <sub>4</sub>				
1	КВОП-К-А-5-2	504	560	595	1090	840	772	1394	480	492	215	207	12	68		
2	КВОП-К-Б-5-2													73		
3	КВОП-К-В-5-2													76		
4	КВОП-К-Г-5-2													79		
5	КВОП-К-Д-5-2													86		
6	КВОП-К-А-6,3-2	634	690	730	1300	1140	1072	1727	610	620	250	247	12	103		
7	КВОП-К-Б-6,3-2													111		
8	КВОП-К-В-6,3-2													111		
9	КВОП-К-Г-6,3-2													132		
10	КВОП-К-Д-6,3-2													138		
11	КВОП-К-А-8-4	810	860	900	1480	1140	1072	2135	740	800	310	285	16	167		
12	КВОП-К-Б-8-4													175		
13	КВОП-К-В-8-4													175		
14	КВОП-К-Г-8-4													182		
15	КВОП-К-Д-8-4													182		
16	КВОП-К-Е-8-4													190		
17	КВОП-К-Ж-8-4													190		
18	КВОП-К-А-8-2													184		
19	КВОП-К-Б-8-2													246		
20	КВОП-К-В-8-2													260		
21	КВОП-К-Г-8-2													2175	780	280
22	КВОП-К-Д-8-2													2135	740	260
23	КВОП-К-Е-8-2													2175	780	280
24	КВОП-К-А-10-6	1010	1070	1110	1960	1340	1272	2175	480	2405	710	1000	325	370	16	177
25	КВОП-К-Б-10-6							179								
26	КВОП-К-В-10-6							221								
27	КВОП-К-Г-10-6							221								
28	КВОП-К-Д-10-6							228								
29	КВОП-К-Е-10-6							237								
30	КВОП-К-А-10-4							208								
31	КВОП-К-Б-10-4							224								
32	КВОП-К-В-10-4							232								
33	КВОП-К-Г-10-4							239								
34	КВОП-К-Д-10-4							247								
35	КВОП-К-Е-10-4	2545	850	332												
36	КВОП-К-А-12,5-6	1260	1320	1360	2500	1590	1522	2920	720	3060	860	1200	380	620	16	376
37	КВОП-К-Б-12,5-6							381								
38	КВОП-К-В-12,5-6							460								
39	КВОП-К-Г-12,5-6							490								
40	КВОП-К-А-12,5-4							460								
41	КВОП-К-Б-12,5-4							530								
42	КВОП-К-В-12,5-4							560								
43	КВОП-К-Г-12,5-4							670								
44	КВОП-К-Д-12,5-4							640								

Notes:

1) Weight is specified for reference only.

AIR PRESSURIZATION FANS AERODYNAMIC PERFORMANCE

3000 – 22000 m<sup>3</sup>/hour



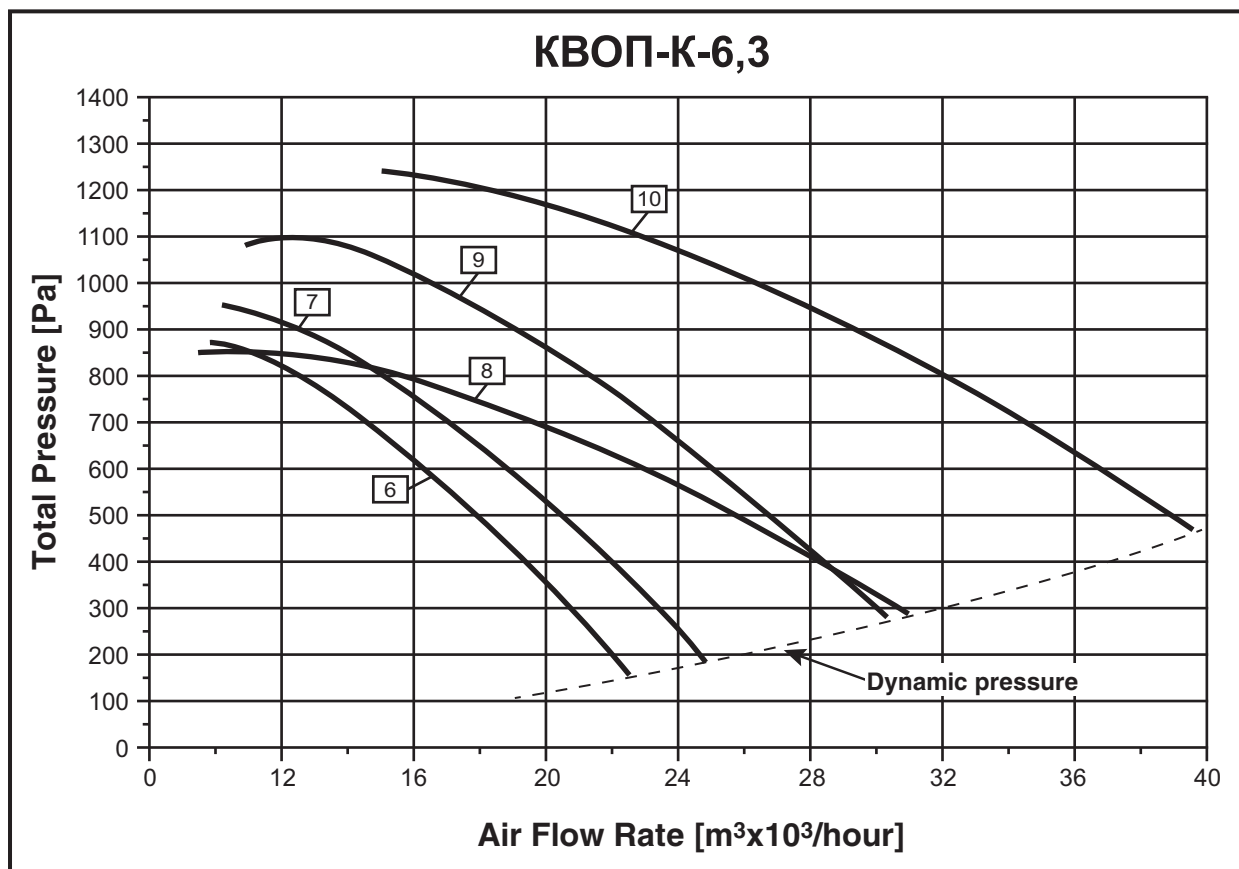
No. п/п	Fan Type	Electric Motor			Operation Area Parameters		Adjusted Sound Power Level L <sub>WA</sub> , [dBA]
		Type	Rotation Speed [min <sup>-1</sup> ]	Generating Capacity [kW]	Efficiency [m <sup>3</sup> × 10 <sup>3</sup> /hour]	Total Pressure [Pa]	
1	КВОП-К-А-5-2	АИР71В2	2900	1,1	3,0 – 11,0	460 – 95	99
2	КВОП-К-Б-5-2	АИР80А2	2900	1,5	3,7 – 11,0	580 – 95	100
3	КВОП-К-В-5-2	АИР80В2	2900	2,2	5,5 – 15,0	700 – 175	98
4	КВОП-К-Г-5-2*	АИР90L2	2900	3,0	5,5 – 18,0	770 – 245	98
5	КВОП-К-Д-5-2*	АИР100S2	2900	4,0	9,6 – 22,0	800 – 370	97

Notes:

\* Explosion-proof version is not available.

AIR PRESSURIZATION FANS AERODYNAMIC PERFORMANCE

9600 – 39000 m<sup>3</sup>/hour



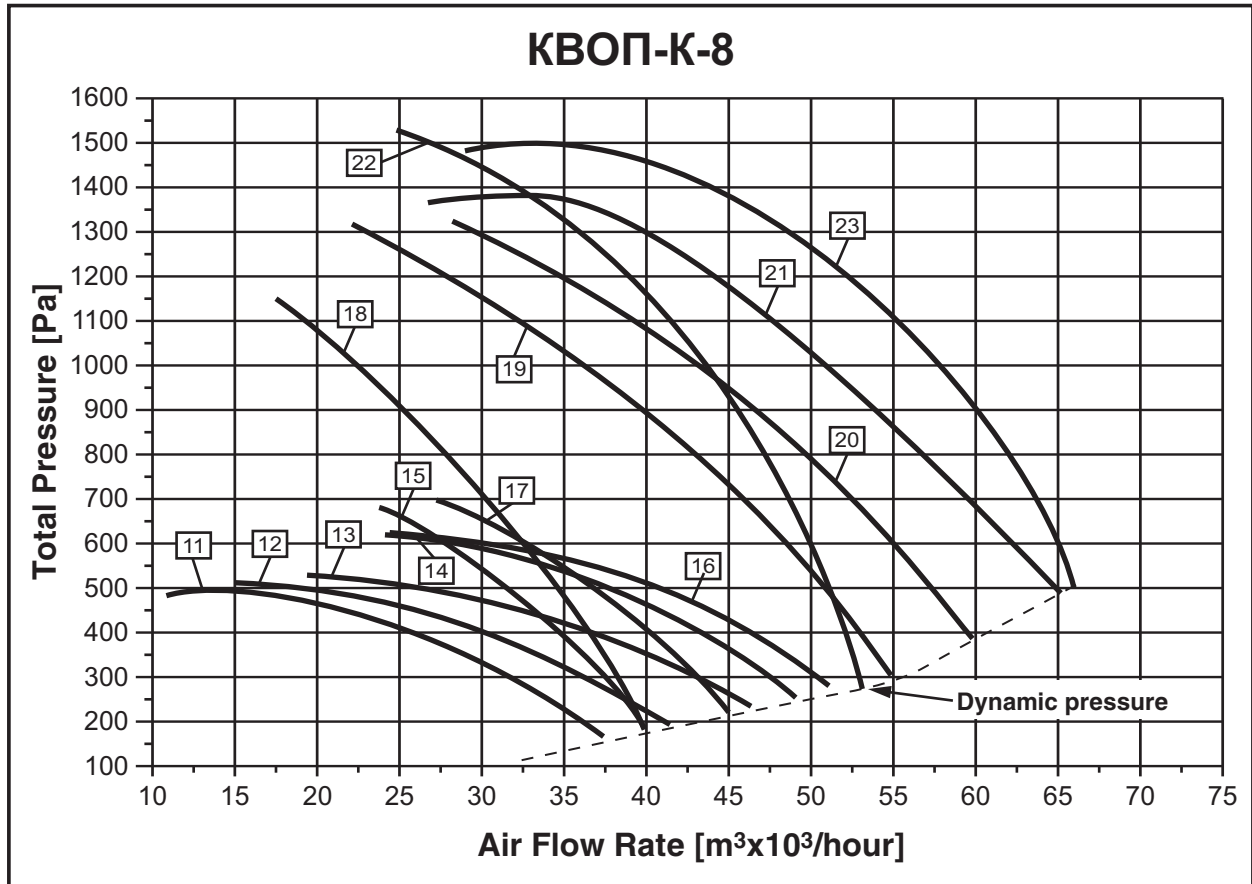
No.	Fan Type	Electric Motor			Operation Area Parameters		Adjusted Sound Power Level L <sub>WA</sub> , [dBA]
		Type	Rotation Speed [min <sup>-1</sup> ]	Generating Capacity [kW]	Efficiency [m <sup>3</sup> × 10 <sup>3</sup> /hour]	Total Pressure [Pa]	
6	КВОП-К-А-6,3-2	AIP100S2	2900	4	9,9 – 22,0	875 – 150	108
7	КВОП-К-Б-6,3-2	AIP100L2	2900	5,5	10,2 – 25,0	950 – 180	107
8	КВОП-К-В-6,3-2	AIP100L2	2900	5,5	9,6 – 31,0	850 – 280	102
9	КВОП-К-Г-6,3-2*	AIP112M2	2900	7,5	11,0 – 30,0	1100 – 270	106
10	КВОП-К-Д-6,3-2*	AIP132M2	2900	11,0	15,0 – 39,0	1240 – 460	105

Notes:

\* Explosion-proof version is not available.

AIR PRESSURIZATION FANS AERODYNAMIC PERFORMANCE

11500 – 65800 m<sup>3</sup>/hour



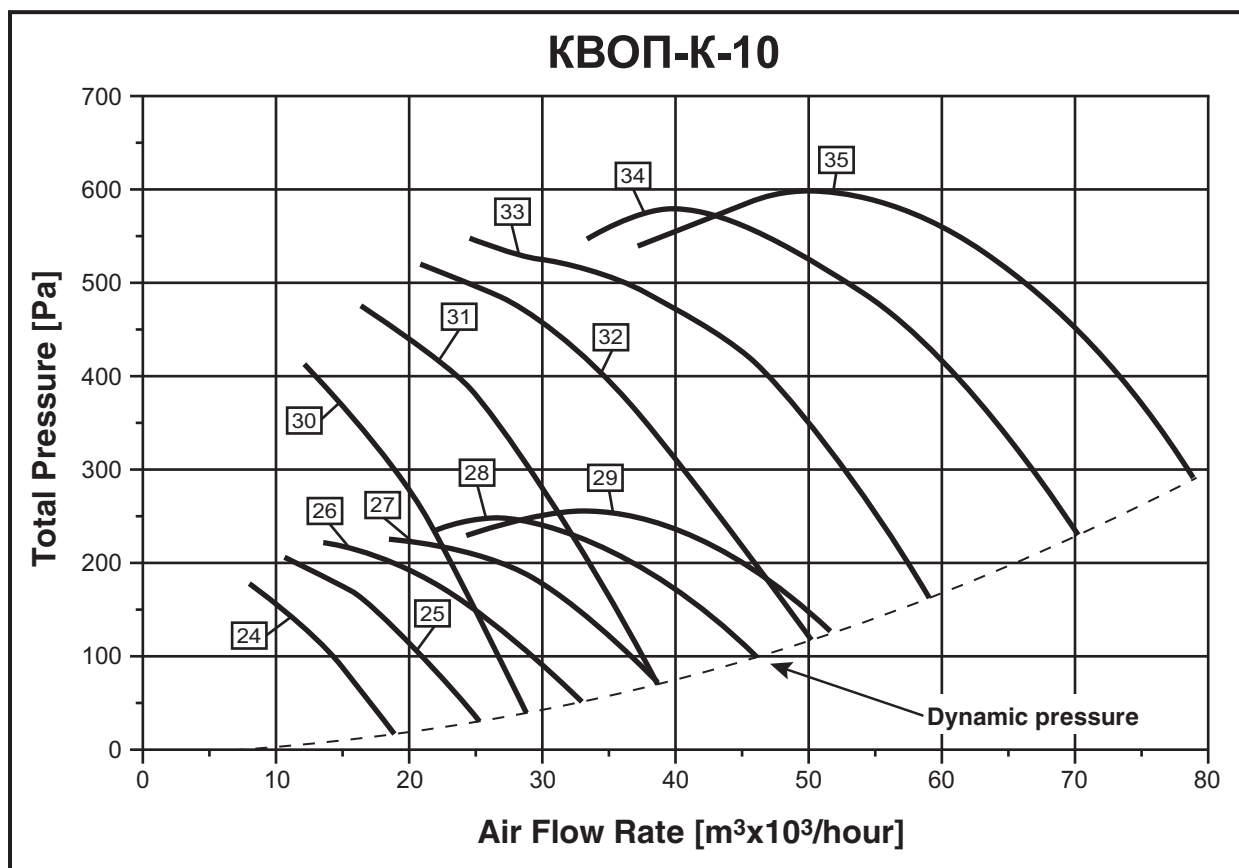
No.	Fan Type	Electric Motor			Operation Area Parameters		Adjusted Sound Power Level L <sub>WA</sub> , [dBA]
		Type	Rotation Speed [min <sup>-1</sup> ]	Generating Capacity [kW]	Efficiency [m <sup>3</sup> x10 <sup>3</sup> /hour]	Total Pressure [Pa]	
11	КВОП-К-А-8-4	АИР100L4	1450	4,0	11,5 – 37,0	510 – 155	94
12	КВОП-К-Б-8-4	АИР112М4	1450	5,5	15,2 – 41,0	520 – 190	93
13	КВОП-К-В-8-4	АИР112М4	1450	5,5	19,2 – 46,0	530 – 250	92
14	КВОП-К-Г-8-4	АИР132S4	1450	7,5	24,0 – 49,0	615 – 270	93
15	КВОП-К-Д-8-4	АИР132S4	1450	7,5	23,5 – 40,0	680 – 180	95
16	КВОП-К-Е-8-4	АИР132М4	1450	11,0	28,8 – 51,0	610 – 290	94
17	КВОП-К-Ж-8-4	АИР132М4	1450	11,0	27,3 – 45,0	700 – 230	95
18	КВОП-К-А-8-2	АИР132М2	2900	11,0	17,5 – 42,0	1150 – 180	102
19	КВОП-К-Б-8-2*	АИР160S2	2900	15,0	22,0 – 55,0	1310 – 300	104
20	КВОП-К-В-8-2*	АИР160М2	2900	18,5	28,0 – 60,0	1330 – 400	106
21	КВОП-К-Г-8-2*	АИР180S2	2900	22,0	27,0 – 62,0	1360 – 490	107
22	КВОП-К-Д-8-2*	АИР160М2	2900	18,5	22,0 – 53,2	1530 – 286	108
23	КВОП-К-Е-8-2*	АИР180S2	2900	22	28,0 – 65,8	1480 – 515	109

Notes:

\* Explosion-proof version is not available.

AIR PRESSURIZATION FANS AERODYNAMIC PERFORMANCE

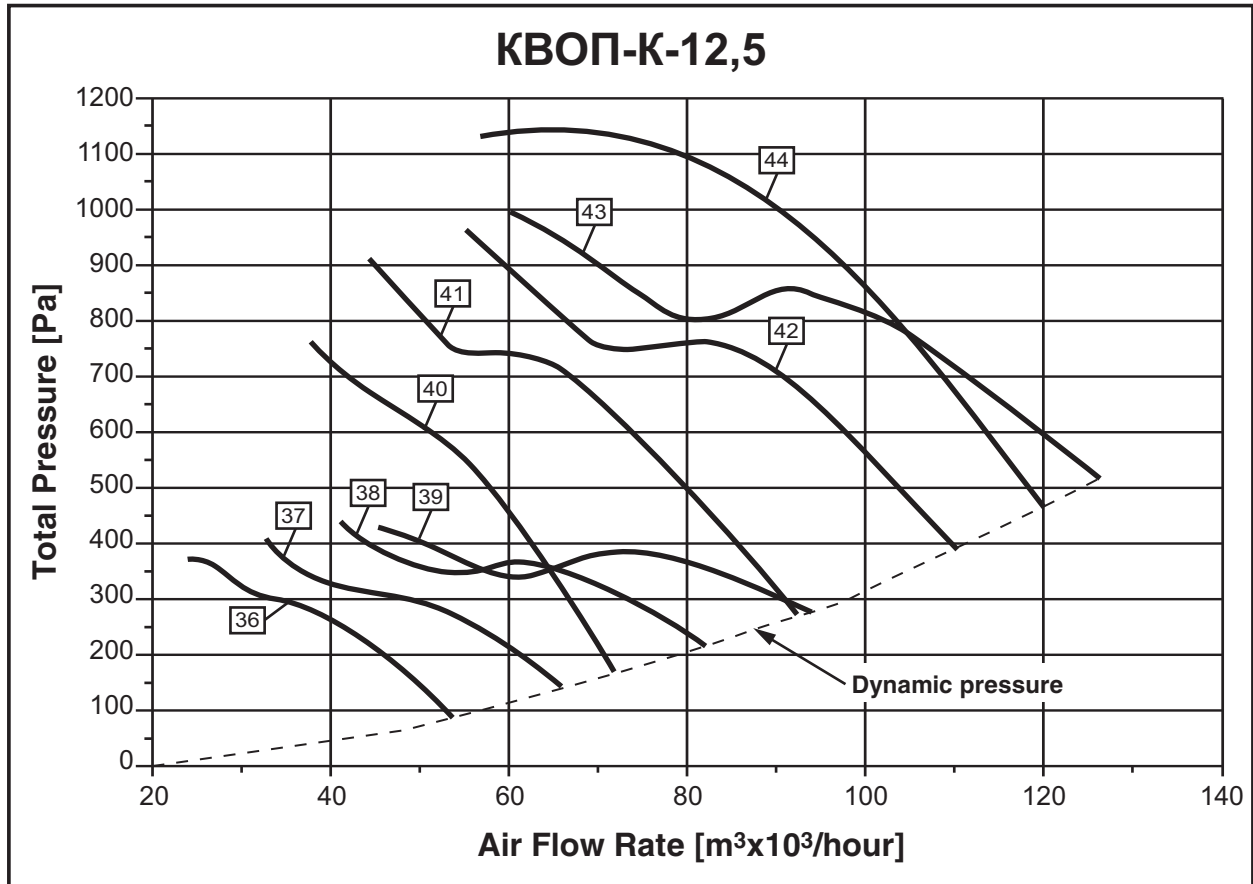
8000 – 79000 m<sup>3</sup>/hour



No.	Fan Type	Electric Motor			Operation Area Parameters		Adjusted Sound Power Level L <sub>WA</sub> , [dBA]
		Type	Rotation Speed [min <sup>-1</sup> ]	Generating Capacity [kW]	Efficiency [m <sup>3</sup> × 10 <sup>3</sup> /hour]	Total Pressure [Pa]	
24	КВОП-К-А-10-6	АИР80А6	950	0,75	8,0 – 18,0	170 – 20	82
25	КВОП-К-Б-10-6	АИР80В6	950	1,1	12,0 – 25,0	190 – 30	84
26	КВОП-К-В-10-6	АИР100Л6	950	2,2	14,0 – 33,0	220 – 50	87
27	КВОП-К-Г-10-6	АИР100Л6	950	2,2	18,0 – 38,0	220 – 70	89
28	КВОП-К-Д-10-6	АИР112А6	950	3,0	21,0 – 46,0	250 – 100	91
29	КВОП-К-Е-10-6	АИР112В6	950	4,0	24,0 – 51,0	260 – 125	92
30	КВОП-К-А-10-4	АИР100S4	1450	3,0	12,0 – 28,0	400 – 38	91
31	КВОП-К-Б-10-4	АИР100Л4	1450	4,0	16,0 – 38,0	450 – 70	94
32	КВОП-К-В-10-4	АИР112М4	1450	5,5	24,0 – 50,0	500 – 120	96
33	КВОП-К-Г-10-4	АИР132S4	1450	7,5	28,0 – 59,0	520 – 170	98
34	КВОП-К-Д-10-4	АИР132М4	1450	11,0	33,0 – 70,0	580 – 230	100
35	КВОП-К-Е-10-4	АИР160S4	1450	15,0	37,0 – 79,0	600 – 290	101

AIR PRESSURIZATION FANS AERODYNAMIC PERFORMANCE

24000 – 126000 m<sup>3</sup>/hour



No.	Fan Type	Electric Motor			Operation Area Parameters		Adjusted Sound Power Level L <sub>WA</sub> , [dBA]
		Type	Rotation Speed [min <sup>-1</sup> ]	Generating Capacity [kW]	Efficiency [m <sup>3</sup> x10 <sup>3</sup> /hour]	Total Pressure [Pa]	
36	КВОП-К-А-12,5-6	АИР132S6	950	5,5	24,0 – 53,7	350 – 90	94
37	КВОП-К-Б-12,5-6	АИР132M6	950	7,5	33,0 – 66,3	400 – 140	96
38	КВОП-К-В-12,5-6	АИР160S6	950	11,0	41,0 – 82,8	440 – 220	98
39	КВОП-К-Г-12,5-6	АИР160M6	950	15,0	45,0 – 93,7	430 – 280	100
40	КВОП-К-А-12,5-4	АИР160S4	1450	15,0	38,0 – 71,6	760 – 165	101
41	КВОП-К-Б-12,5-4	АИР180S4	1450	22,0	46,0 – 92,3	900 – 270	105
42	КВОП-К-В-12,5-4	АИР180M4	1450	30,0	55,0 – 110,0	935 – 390	106
43	КВОП-К-Г-12,5-4	АИР200L4	1450	45,0	60,0 – 126,0	990 – 510	108
44	КВОП-К-Д-12,5-4	АИР200M4	1450	37,0	57,0 – 120,0	1130 – 460	110